



DEPARTMENT OF FIRE AND EMERGENCY SERVICES
DIRECT BRIGADE ALARM (DBA) TECHNICAL BULLETIN
JULY 2014 (ADVICE 3)

AS1670.1 (2004) requires the electrical installation to the Fire Indicator Panel to comply with AS3000.

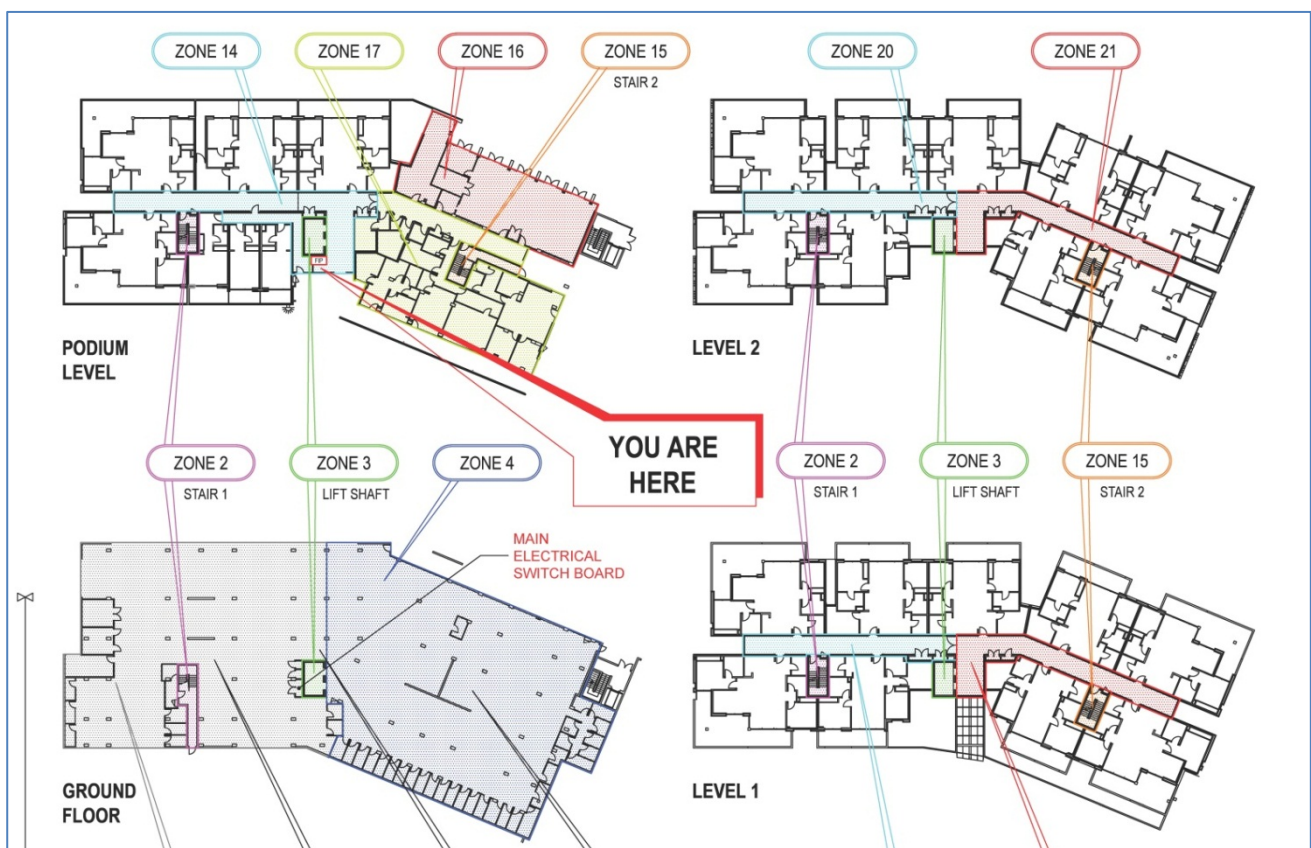
AS3000 (2007) requires that the supply to the FIP be specifically compliant to Clauses 2.9.2.4 & 7.2.6.2.

These requirements are not the obligation of the fire alarm agent, but the electrician, and/or the contractor connecting the essential primary supply to the FIP.

The signage at the entrances may be resolved by placing the Main Switch Board location on the FIP zone plan, or they may elect to install the signage as required.

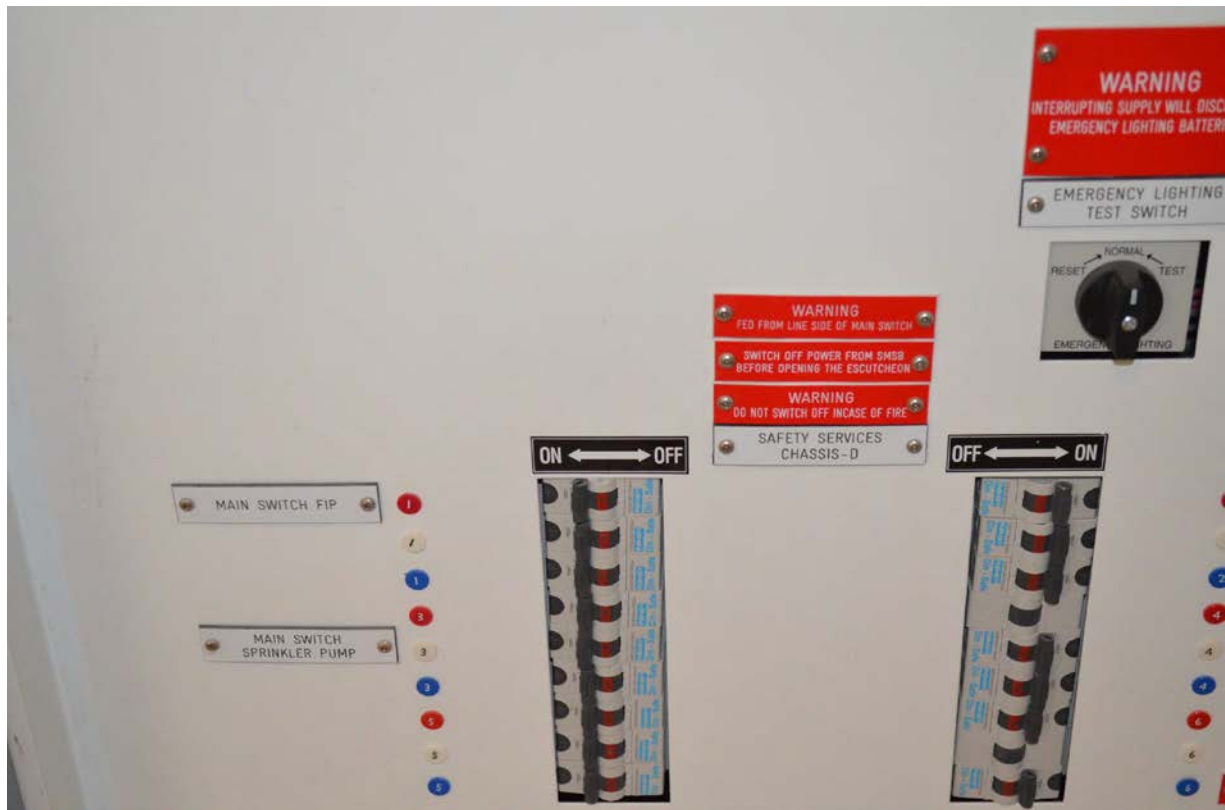
The wording, if placed on the FIP Zone Plan, shall be specifically '**MAIN ELECTRICAL SWITCH BOARD**' and not MSB, MEB, or MAIN SWITCH BOARD.

Attached are examples of the signage requirement and labelling requirement:





EXAMPLE OF TYPICAL SWITCH BOARD FIP CCB LABEL



For further advice or clarification re this matter, contact the DBA Contracts Manager at DFES on 08 9395 9865 or 0408 958 483, or email jeff.morton@dfes.wa.gov.au